

# 北京



[www.gochina.com.au](http://www.gochina.com.au)

## Beijing 北京

Beijing, capital of the People's Republic of China, is the hub of the national political and cultural life.

It is an old city full of vigor. It is also where different cultures meet and melt into one.

In today's modern world, it is a well known tourist destination, as well as taking an important position in the history of human civilisation.

Beijing is a unique and charming city with its own features. Wherever you go, you will be amazed by the fusion of history and modern development.

This guide book will assist you in finding many of the places of historical interest and scenic beauty. You have the option to take the easy way in a taxi, or the adventurous way on foot and by public transport.

The aim of this form of independent travel is not just to see the sights, but to experience the journey along the way.

All directions in this guide book are from the Lishi hotel unless specified

# Lishi Alley 礼士胡同

**Snapshot :** Lishi Alley will be home for a while. You will surely love the quaintness of the alley and appreciate its cultural richness. You do not need a rickshaw ride through a traditional alley, you are living in one! Take time to appreciate the surrounding alleys, walk each morning and night to see the changing activities throughout the day.



## Lishi Hotel

Tucked away in the alley, yet close to the centre of Beijing, the Lishi Hotel provides more than enough comfort to escape the busyness of the city.



## Get your bearings

**Standing with your back to the hotel.** Standing with you back to the hotel you have two exits. The exit on the right will be called the Short End of the alley and the exit on the left is the Long End.

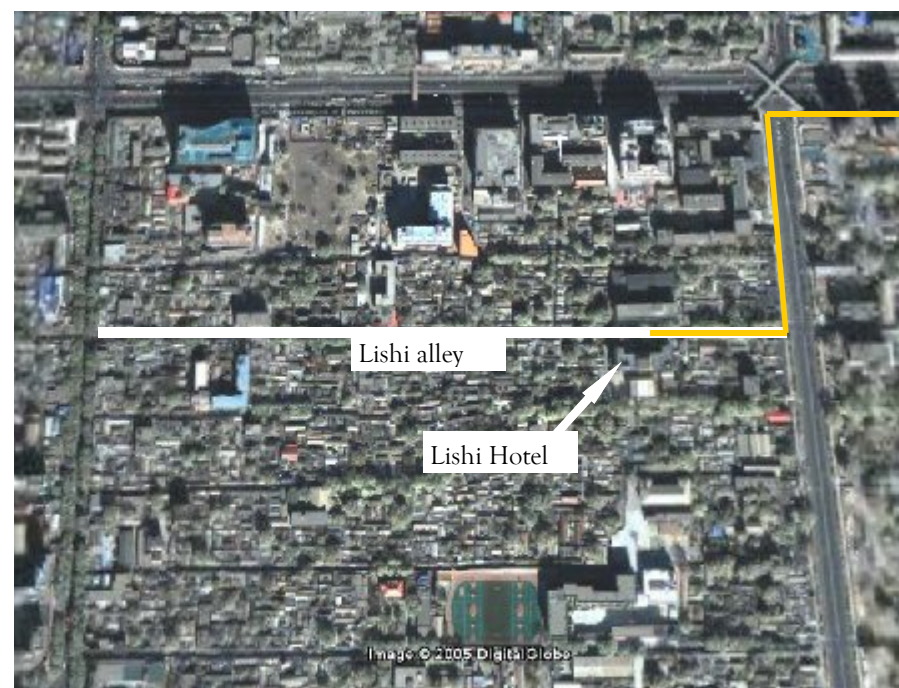


## Getting there and away.

### Leaving the hotel.

**Catching a taxi.** The easiest end to catch a taxi is the Short End. When you get to the intersection you will need to decide to cross the road or not.

**Subway.** Short End, at the alley entrance turn left. Walk to the major intersection, characterised by overhead pedestrian bridges. At this major intersection, turn right. Walk to the next major intersection and you will find a subway entrance. (yellow line below)



## Returning to the hotel.

The reception desk has small cards which you can show to the taxi driver. Be sure to get one of these cards to help you find your way back.



The alley is rich in history. Even though you may not be able to understanding what is going on around you, be sure to take your time walking the alley.

There are many other smaller alleys which lead off the main alley, go down these and explore the area.



## Small shops.

The alley has a host of small convenience stores. These are great to pick up a beer or snack. The best stocked and closest convenience store is located long end of the alley, turn left, do not cross the road and you will find it on your left about 100 metres down the road.

**Alley Restaurants :** Left Exit across the road, you will see some little restaurants. The quality is good, and very cheap. They also have take away.



For some authentic Chinese dumplings, try the dumpling restaurant next door to the hotel.

Left exit, do not cross the road, first restaurant. The word for dumpling is jiaozi. Just show the restaurant these characters and you will get some dumplings.

## 我们想吃饺子

Of course there are many other restaurants in the alley. The other ones recommended are Long End of the alley on the right hand side just before the exit to the main road.

Long End of the alley : The photo below is of the intersection of the Long End of the alley and the main road. This will help you get your bearings when you walk back from a day out.



# Wangfujing 王府井大街

**Snapshot :** Wangfujing is like Brisbane's Queen Street Mall. It has many modern department stores, but also places of historical and cultural interest. You can spend hours at Wangfujing looking around, or just sit on one of the seats and watch the people go by. It is certainly worth visiting more than once.



The northern end of the mall is characterised by Sun Dong An Plaza.

The southern end has the Malls of Oriental Plaza.

Both are major shopping centres filled with modern shops.



## How to get there?

**Taxi :** Short End of the alley. Do not cross the road and get in a taxi. Show him the below characters and you will be dropped of at the Sun Dong An Plaza. There is a taxi rank at the back of the plaza.

# 王府井的新东安市场

**Walk :** The walk will take about 20 minutes. Long End of the alley. As you leave the alley, cross the road and turn left. Walk to the first intersection and turn right (you shouldn't be able to turn left). This T-intersection is characterised by cars parked on the footpath (usually).

As you walk down this road, on the right you will see a restaurant called Taiwan Restaurant (a good place to eat). You will pass a McDonalds on your right. Just past McDonalds you will see a big yellow supermarket sign. This is a good place for your groceries. To get in you need to go downstairs (not easy to find). If you have difficulty stand in front of the sign and show the first passer-by the below.

## 请问，怎么进市场？

At the next major intersection turn left. This is now Wangfujing street. Keep walking and you will enter the mall. On your left you will see this old church, you are almost there.



You could spend hours looking around in Wangfujing street, and staying in Beijing 12 days will certainly allow you this luxury. Below are a few places which may be of interest.

**Coffee.** Starbucks. Enter Sun Dong An Plaza at the main entrance. The main entrance is characterised by some copper statues which are found to the right. Below is a picture of one of the statues. Go in the main doors, and go downstairs. You will find Starbucks, traditional tea house and a Watsons chemist.



**Bakery.** Next to Starbucks you will find a very nice bakery called BreadTalk. The quality is very good.

**Old Beijing Street.** Located downstairs in Sun Dong An Plaza. The entrance is near Starbucks. The bathrooms are also located in Old Beijing Street. The historical "Old Beijing Street" covers over 1500m<sup>2</sup>, with buildings and roofs modelled after a traditional Beijing neighbourhood. There are more than 20 stalls offering in old Beijing favourites, including special handicrafts, traditional snacks, royal foods and famous brand names.



Of course there are many other places you will discover in Wangfujing Street. One other store which has historical significance is the Beijing Department Store. Originally the only department store around, this store has been modernised to keep up with the times.

#### To Eat.

**Chinese.** With your back to Wangfujing Mall facing down towards the Church you passed, turn left and walk about 100 metres down the road. Set back a little is a restaurant called the Hong Kong restaurant. With English menus to make things easy, this is a restaurant with very good quality food. Be sure to ask for the special tea.

## 八宝茶

**Western.** If you want a top quality Western meal, go to the Novotel Peace Hotel. With your back to Wangfujing Mall facing down towards the Church you passed, turn right and walk about 400 metres down the road. You will see it across the road. The restaurant is called The Square and the attached deli sells good ham.

# Tian'an men 天安门

**Snapshot :** Tian'an men (gate of heavenly peace) was built during the Ming Dynasty in 1417. The Rostrum, which is located to the north of the square, was formally the entrance to the Forbidden City. It was here, from the Tian'an men Rostrum that Chairman Mao Zedong announced the founding of the People's Republic of China in 1949.



The characters to the left mean

**Long live the People's Republic of China**

The characters to the right mean

**Long live the unification of the people of the world**

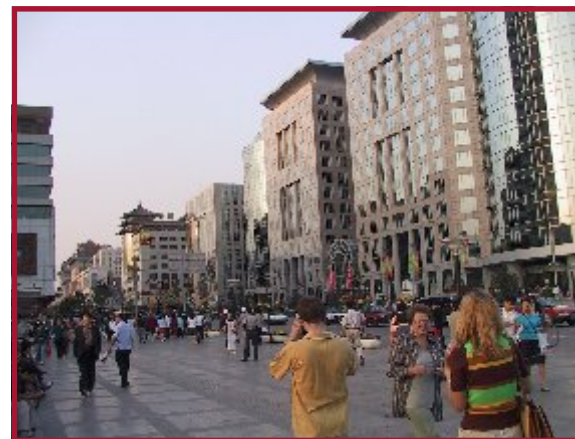


## How to get there?

**Taxi :** Even though every taxi driver will know where this is, there is no stopping allowed near the rostrum. For this reason, it is far easier to catch the subway or walk.

**Subway :** The closest subway stop is East West Line—Tiananmen Dong (天安门东)

**Walk :** The walk will take about 45 minutes. Walk to the southern end of Wangfujing Street, turn right. You are now walking along Changan Boulevard. After about a 10 minute walk, the Rostrum will appear on your right.



Southern end of Wangfujing Street.

The Southern end is noticeable by the large shopping centre called

Malls at Oriental Plaza

Tiananmen is the launching point for several other activities including some sights and shopping.

**Shopping.** The closest shopping to Tiananmen is Qianmen Markets or also known as dashilan. The directions are later in this guide.

**Sights.** There is plenty to see in Tiananmen. Give yourself plenty of time to see Mao's body, go to the Museum, climb the Rostrum and watch the passers-by.

## Tian'an men Square 天安门广场

**Snapshot :** Tian'an Men Square is the one of the largest in the world. It is 880 metres long and 500 metres wide. It occupies an area of 440000m<sup>2</sup> and can accommodate gatherings of up to 1 million people.



### Monument to the Peoples' Heroes

This is found in the centre of the Square and which is a memorial to the Chinese peoples' hard struggles for liberation.

### Chairman Mao Memorial

This is also found in the centre of the Square. Built in 1977, this memorial is the final resting place for Chairman Mao.

Be sure to line up and visit his body. You will need to go in 1 at a time or check all your bags in across the road.



This photo is taken from the top of the Tiananmen rostrum. For a small fee you can enter the Rostrum for a full view over the square.

**How to climb the rostrum.** Once you walk under Mao's picture and come out of the hallway, turn left/right (the ticket booth moves daily) and you will see some small ticket booths where you can purchase a ticket.

**Chinese Museum.** The building on the left of this picture is the Chinese Museum. It is the building of the left hand side of the Square when standing with your back to Chairman Mao. The building on the right is the Great Hall of the People.

In front of the Museum is a large clock which is being used to count down the time to the Beijing Olympics. This is the same clock which was used in 1997 to count the down the time to the handing back of Hong Kong to Chinese rule.

## Forbidden City

## 故宫

**Snapshot :** The Forbidden City, also known as the Imperial Palace, was the Imperial Palace of the Ming and Qing Dynasties. It is 960 metres long and 750 metres wide. Being the largest and best preserved imperial palace in the world, you will spend hours exploring the 900 rooms.



### How to get there?

**Taxi :** Short End of the alley. Do not cross the road and get in a taxi. Show him the above characters and you should be dropped off above at the gate. If not, follow the crowd. The museum is directly through the large gate under Chairman Mao's picture.

**Walk :** Follow directions on previous page to Tiananmen Rostrum. Walk through the large tunnel under Chairman Mao's picture and you will see the gate in the picture to the left. This is the front entrance.

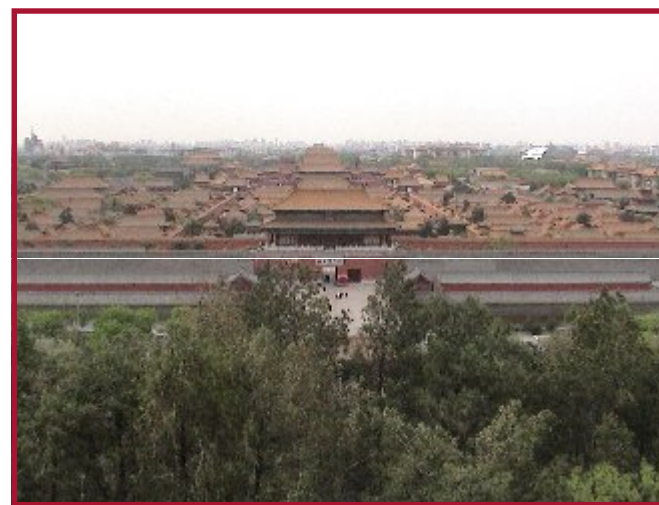
**The back entrance.** See the instructions on Scenic Hill below.

## Scenic Hill

## 景山公园

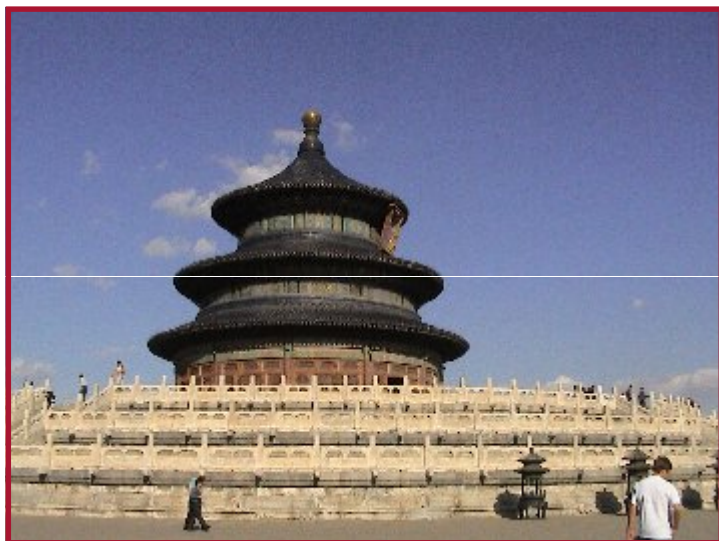
Scenic Hill is a great spot to start your tour of the Forbidden city. This hill is the only hill in Beijing. When the Palace moat was dug, the workers put the earth in one 'large' pile, this became scenic Hill. The views over the Palace are exceptional.

**Walk :** Long end of the alley, turn right. At the first intersection (a major intersection), cross the road and turn left. Now just keep walking. You will eventually come to Scenic Hill on your right. The walk will take you about 45 minutes.



## Temple of Heaven 天坛

**Snapshot :** Built in 1420, the Temple of Heaven is situated in a park of over 270 hectares. This is a unique architectural structure, being the largest wooden structure in the world which does not contain a single nail.



### How to get there?

**Taxi :** This is the most convenient method. Catching public transport or walking is possible, but difficult without reading Chinese. Show the taxi driver the characters above. Once you are dropped at the gate, expect a long walk into the centre of the park.

## Summer Palace 颐和园

**Snapshot :** The Summer Palace was laid out in 1750, however was burned down by the occupying British and French forces in 1860. The Palace was the haven for the Emperor in Summer, escaping the heat in the centre of Beijing.



### How to get there?

**Walk :** Public transport is possible and recommended. The trip is long and could take 2 hours. You will see plenty of things along the way.

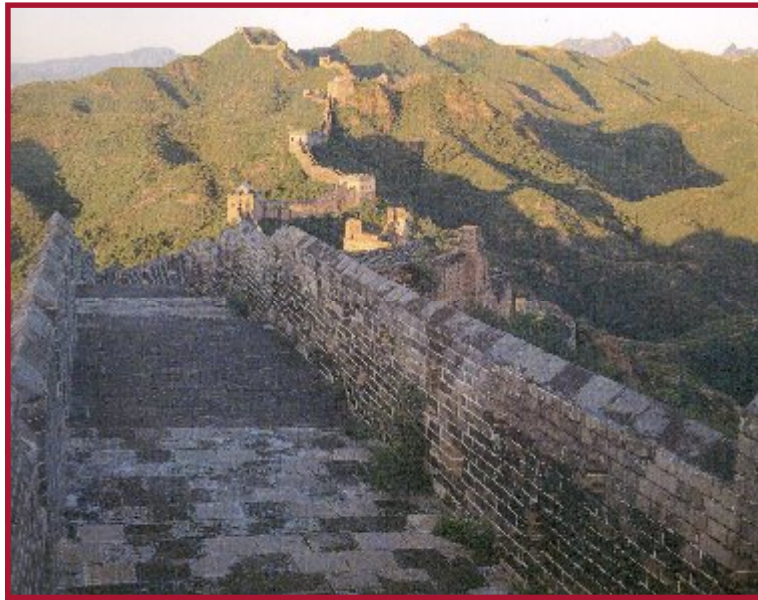
Catch the subway to Xizhimen station. Once you get off the train, find the 375 bus. Xizhimen is the terminus for the 375 bus. Once you find the bus, ride it all the way to the end of the line. You will encounter a McDonalds and the back gate to the Palace.

**Return Journey.** Get a taxi. The return journey is not as easy and it is possible to get very lost. Before getting in a taxi however, make sure you get the driver to use the meter. Once you come out of the Palace you will be swamped by drivers trying to rip you off.

## Great Wall

## 长城

**Snapshot :** There are 3 sections you can visit easily when you think of the Great Wall. The most tourist populated section is Badaling. Try to avoid this to see the real Wall in its original state.



### How to get there?

The easiest way to get to the wall is hire a car from the reception desk. It is possible to go on a tourist bus which can be booked at Tiananmen square, however a car is not much more expensive and you can choose where to go.

The 3 sections.

**Badaling.** Touristy and not recommended. It is the closest section to Beijing, hence the tourist groups visit in order to save fuel costs.

**Mutianyu.** This is the next section and is very impressive. Not as steep as Badaling, but the scenery is spectacular. The cable car also makes the climb to the top a lot easier. When you get onto the Wall, turn left and after about a 45 minutes walk, you will get to the original broken down section that has not yet been repaired.

On the way to the Wall, you will pass through a small town called huairou. This is a good place to stop for lunch on the way back to Beijing.

**Simatai.** This section of the wall is rugged. The steep climbs and sharp cliffs are only for the brave and experienced.

### To book a car.

Show the reception desk the below and they will help you book a car.

请你帮我订车去长城。

(please help me arrange a car to the Wall)

我想去慕田峪

(I would like to go to Mutianyu)

## Shopping

**Snapshot :** There are plenty of places to go shopping. Below are a list of shops and some instructions on how to get there.

**Qianmen Markets.** These markets are good for everything. Not specialising in any one item, you will get lost in the back alleys and range of stores. Be careful of pickpockets.



### How to get there?

From Tiananmen Square, the markets are at the opposite end of the square to Chairman Mao's picture. You will need to cross the street via the underground crossings. You will see a large KFC. The markets are all in behind the shops which face the square.

Taxi. Show the driver the following. 前门市场

**Silk Markets.** These markets are good for everything no that they have been rebuilt. These markets are now situated in a 4 storey building. Be sure to bargain hard.



### How to get there?

**Subway.** Catch the subway to yonganli station. 永安里

As you leave the station be sure to keep an eye out for the subway markets. These are also very good.

As you come up from the station, the markets are situated in the building as pictured below.

**Taxi.** Show the driver the following. 秀水市场

